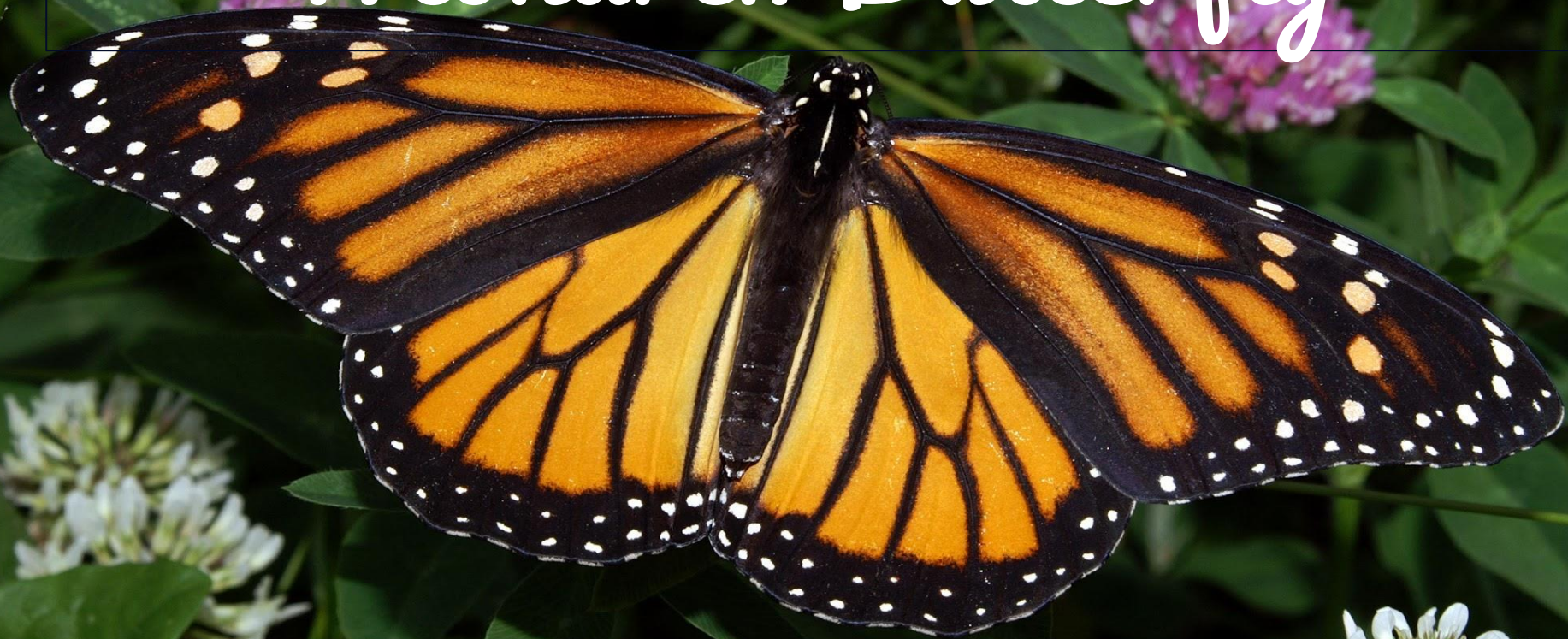


Monarch Butterfly



Monarch Butterfly Facts

Monarch Butterfly Facts

There are about 18,000 kinds of butterflies in the world. While other butterflies migrate, scientists think that monarchs migrate the farthest.

Food: Butterflies eat nectar; caterpillars eat milkweed plants.

Wingspan: 3.7 to 4.1 inches
(9.4 to 10.4 cm)

Weight: About 0.017 ounces
(0.5 g)—or about as much as a paper clip

Life Span: One to eight months

Cool Fact: Monarchs use their feet to taste leaves. Females do this to make sure they are laying their eggs on milkweed plants.



Size of an adult monarch butterfly



A teacup

Butterflies are winged insects from the lepidopteran suborder Rhopalocera, characterized by large, often brightly coloured wings that often fold together when at rest, and a conspicuous, fluttering flight.

by: Laura Marsh



Monarch adults have relatively dark black lines on the upper sides of their wings compared to queens and soldiers. Their caterpillars are distinct from those of queens and soldiers by having only two sets of antennae, rather than three. Monarch adult .



What Monarch Butterflies colors on their wings look like.



by:Jessica Rudolph

5 Fun Facts



1. A butterflies can see colors that the humans cannot see
2. Butterflies can not fly when it's cold
3. The largest butterfly is a endangered
4. Did you know that butterflies taste with their feet?
5. To avoid predators butterflies perform tricks with their feet.

*Fun fact: Monarch butterflies live in the north central
South America as well as
Australia*

Butterflies!



By Darlene Freeman



10 Facts About Butterflies



Butterflies flap their wings about five times every second

There are around 28,000 species of butterflies in the world

They are found on all continents apart from Antarctica

Butterflies use the antennae on their head to feel, hear & smell

They start life as an egg before changing into a caterpillar, then butterfly

The average lifespan of a butterfly is between 3 days & 11 months

Female butterflies are bigger and live longer than males

Butterflies actually have four wings - not two!

Butterflies see colours that humans can't see

Some butterflies can fly as fast as 30 miles per hour

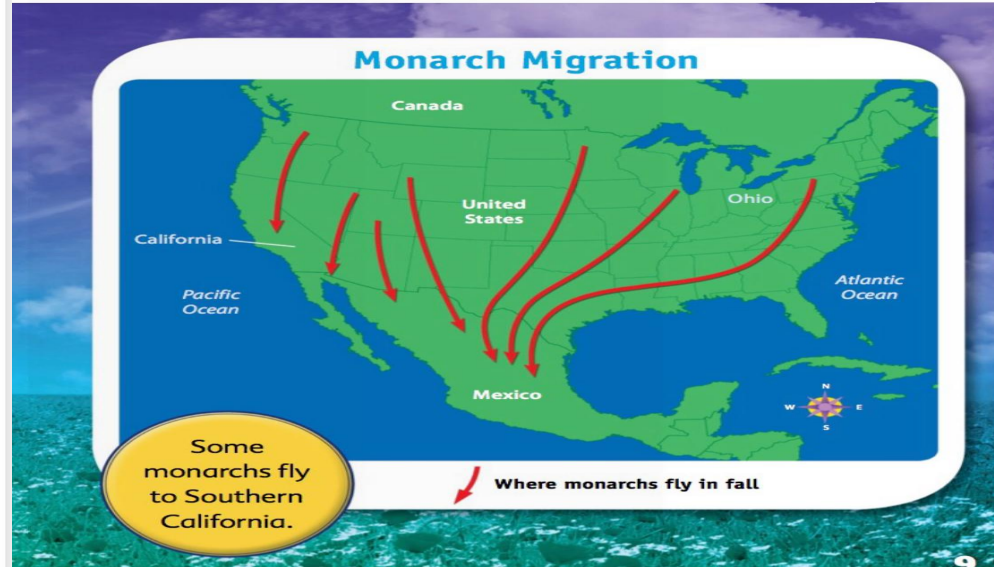
Migration

Monarch Butterflies migrate to Mexico in the Fall!

They are the only butterfly known to make a two-way migration. They can travel as far as 3,000 miles to reach their destination!

Research is still being done to figure out how they find their way. It is thought to be related to the magnetic pull of the earth as well as the position of the sun!

This is a butterfly map of how butterflies migrate



Butterflies by: Joyce Markovics

Fun facts:

Why Butterflies Matter

Butterflies help spread the pollen from one flower to another, facilitating plant reproduction.

They are "ecological indicators," meaning their abundance or scarcity is a sign of any chemical or physical change in the environment.

A change in butterfly population could indicate a proportional change in the vertebrate or insect numbers in an area.

They are the food sources for many birds and insectivorous animals.

Their aesthetic value adds to their importance since butterflies enhance the beauty of nature through their vibrant colors.

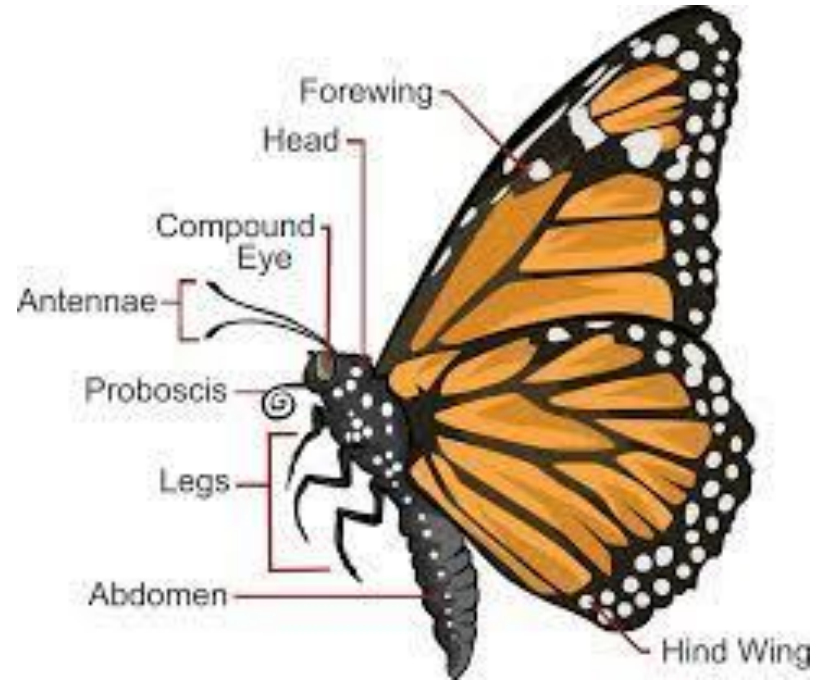
The migration of the Monarch butterflies to Mexico coincides with Día de Muertos (Day of the dead). The Mexicans believe the arrival of the butterflies signifies the arrival of their ancestors' souls.

REFERENCES

- 1 WHY BUTTERFLIES MATTER; BUTTERFLY CONSERVATION
- 2 BUTTERFLIES AND THEIR CONTRIBUTION IN ECOSYSTEM; JOURNAL OF ENTOMOLOGY AND ZOOLOGY STUDIES
- 3 MONARCHS AND DÍA DE MUERTOS IN MEXICO; MONARCH JOINT VENTURE

Fun Fact

*There more than 15,000 kinds of butterflies
In the world.*



19 Fascinating Butterfly Facts

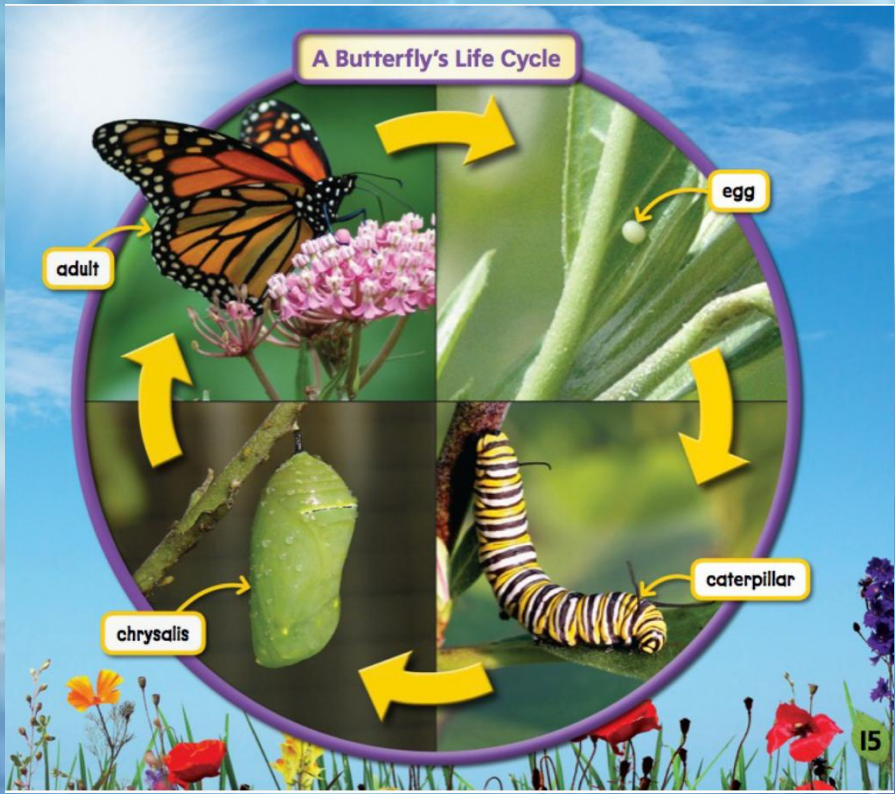
- Butterflies taste with their feet.
- A group of butterflies is sometimes called a flutter.
- Their eyes are made of 6,000 lenses and can see ultraviolet light.
- There are 165,000 known species of butterflies found on every continent except Antarctica.

They uncurl it like a long straw to suck up food including nectar and fruit juices. Butterflies are insects.

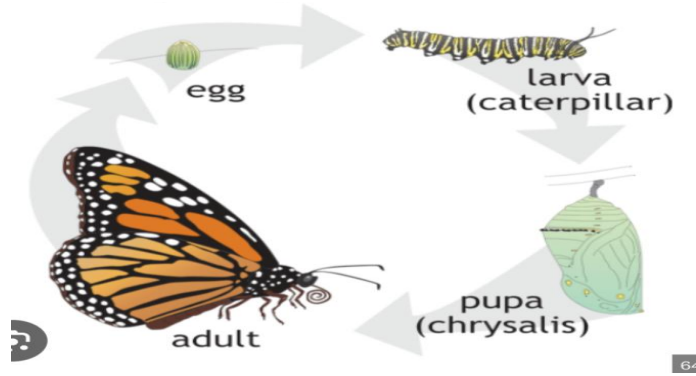
They have 3 body parts: a head, thorax (middle part) and abdomen (tail end). They also have 6 legs and 4 wings



A Butterfly's Life Cycle



Lifecycle: part 1



In order to grow, the caterpillar sheds its old skin.

This is called **molting**.

Over two weeks, the little insect will molt four times.



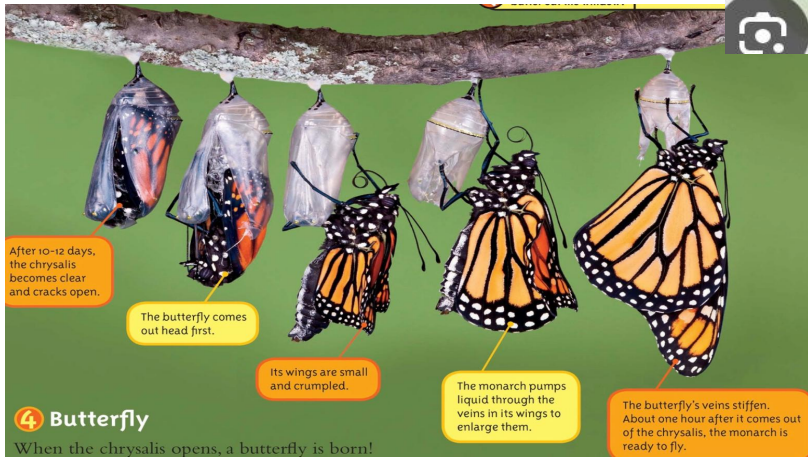
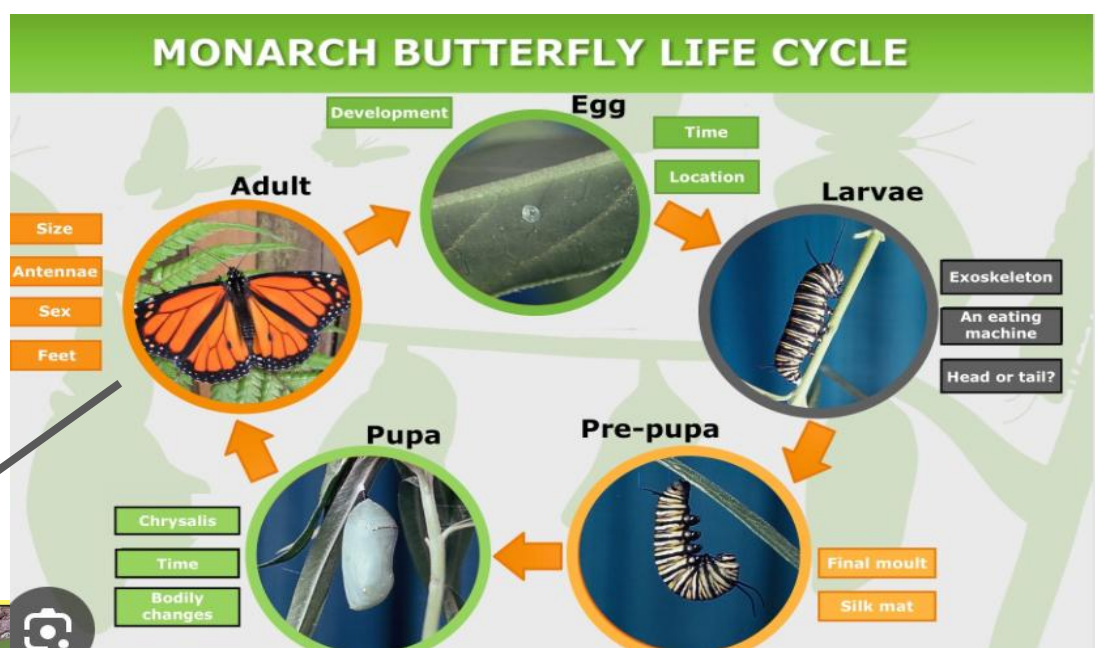
How caterpillars make their chrysalis

by: Jessica Rudolph



by: Jessica Rudolph

Lifecycle continued...





Fun Facts monarch butterfly's eggs hatch in four days. They can taste things with their legs . When they travel they use the wind



Here are 10 butterfly facts you'll find fascinating.

- Butterfly Wings Are Transparent.
- Butterflies Taste With Their Feet.
- Butterflies Live on an All-Liquid Diet.
- A Butterfly Must Assemble Its Own Proboscis—Quickly.
- Butterflies Drink From Mud Puddles.
- Butterflies Can't Fly If They're Cold.
- A Newly Emerged Butterfly Can't Fly.





DID YOU NOW?

The key is their ability to tell time and track the position of the sun. The time-keeping cells are in their antenna, and butterfly eyes can follow the sun's location with good accuracy. That tracking lets the butterfly's brain know where to turn to find its genetically programmed destination.



Native Americans have considered butterflies as symbols of transformation, hope, and rebirth. In Chinese culture, the symbolism of butterflies evokes the qualities of freedom, earthly beauty, love, and the human soul. They have inspired humans for millennia with their delicate nature and the immense power they possess.



Where do they live?

Monarch butterflies may be found throughout North America feeding on milkweed, their toxic host plant. Monarch butterflies live mainly in prairies, meadows, grasslands and along roadsides, across most of North America. Mar 6, 2023

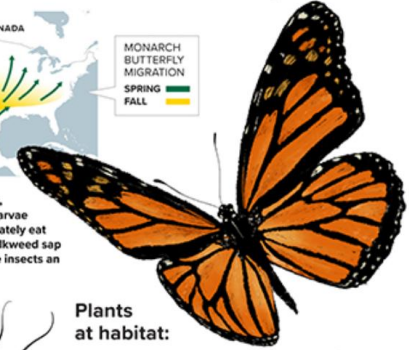
UAB builds new monarch butterfly habitat

The butterfly habitat at 11th Avenue South and 17th Street is the first section of a larger insect meadow coming to campus.



■ Migrate from Mexico to Canada

■ Monarchs lay their eggs on the plant, acting as a habitat. Then, when the larvae (Caterpillars) hatch, they can immediately eat the plant, providing nutrition. The milkweed sap ingested by the larvae then gives the insects an unappetizing taste to predators such as birds, protecting them from being eaten.



Plants at habitat:

- Orange milkweed
- Swamp milkweed
- Black-eyed Susans



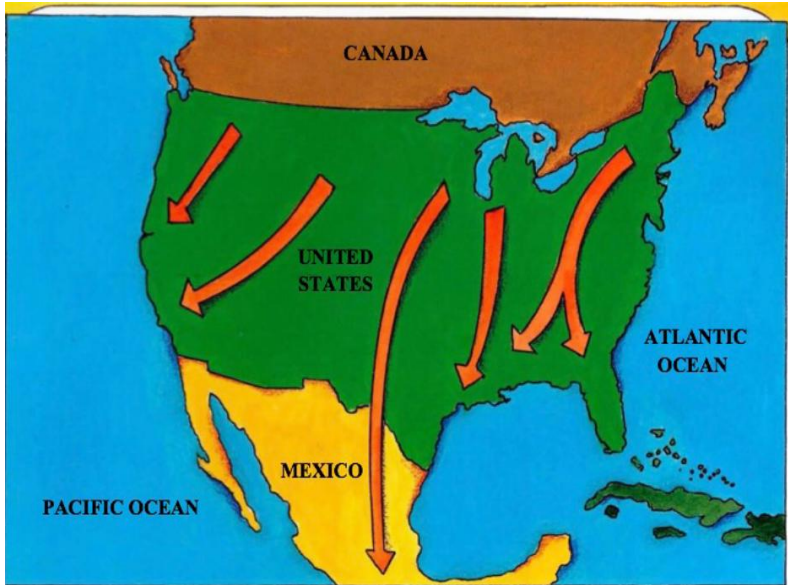
Plantings are done in masses, fairly close together. This style of planting makes it easier for insects to see. Their eyesight, different from humans', sees yellow, pink and orange blobs of color easier than a single specimen.

Migration or Where Monarch Butterflies Go:

by: Gail Gibbons



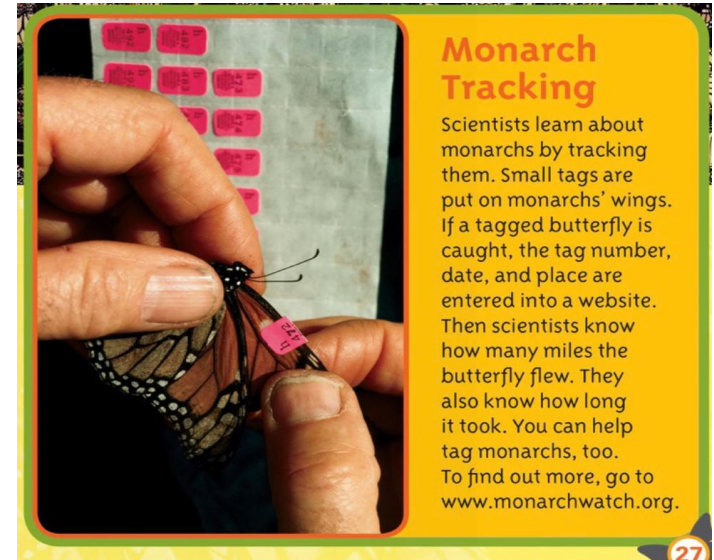
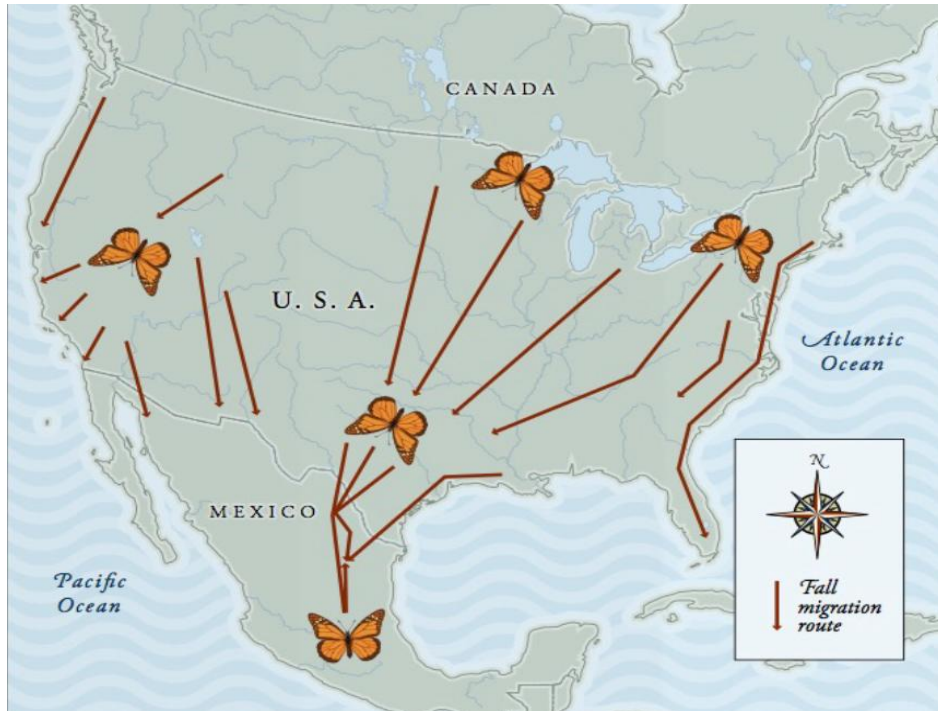
Laura Marsh



They fly to places such as Florida, southern California, and Mexico. Some butterflies migrate 4,000 miles! They will stay south throughout the winter.



More on Migration

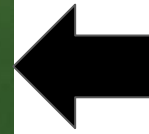


Male butterflies
have two black
dots on their wings.
Females don't have
these dots.



black dots

7

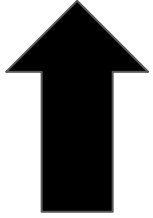


by: Jessica Rudolph

The difference between a male and a female butterfly

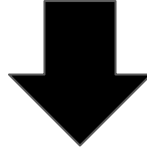


Butterflies don't have noses



Google

Goggle



*We hope you enjoyed our
presentation on monarch butterflies*

